

vtech[®]
Baby

Parent's Guide

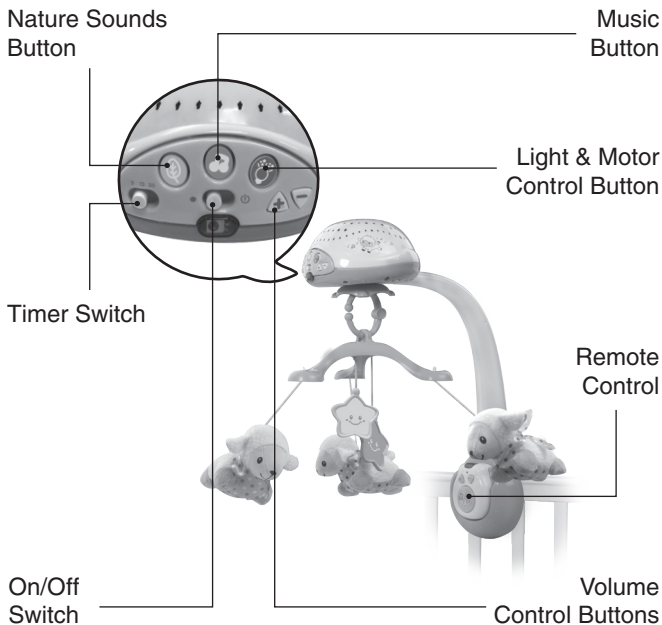
Soothing Slumbers Sheep Mobile™



91-003494-019 

INTRODUCTION

Thank you for purchasing the **VTech® Soothing Slumbers Sheep Mobile™**. Relaxing melodies, calming nature and white noise sounds, and soothing songs gently lull your baby to sleep. Watch the three fluffy sheep gently spin while the music plays and the colorful lights fade in and out from the projector.



INCLUDED IN THIS PACKAGE

- One parent's guide



One remote control



One C ring



One mobile attachment



Four small screws



One mobile support post



Two plastic stars



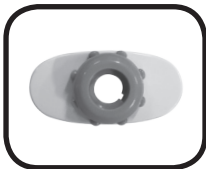
Three soft sheep



**Soothing Slumbers
Sheep Mobile™**
projector



Base unit and
crib attachment



Chunky screw

WARNING: All packing materials such as tape, plastic sheets, packaging locks, removable tags, cable ties, cords and packaging screws are not part of this toy, and should be discarded for your child's safety.

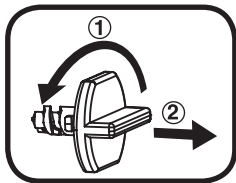
NOTE: Please keep this parent's guide as it contains important information.

ATTENTION : Pour la sécurité de votre enfant, débarrassez-vous de tous les produits d'emballage tels que rubans adhésifs, feuilles de plastique, attaches, étiquettes, cordons et vis d'emballage. Ils ne font pas partie du jouet.

NOTE : Il est conseillé de conserver ce guide des parents car il comporte des informations importantes.

Unlock the packaging locks:

- ① Turn the packaging lock counterclockwise several times.
- ② Pull out and discard the packaging lock.

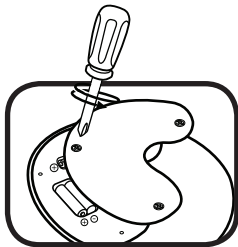


GETTING STARTED

BATTERY INSTALLATION

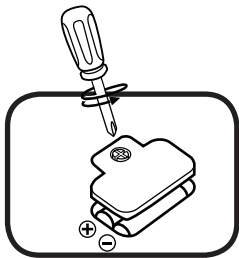
Soothing Slumbers Sheep Mobile™ Projector

1. Make sure the unit is turned **OFF**.
2. Locate the battery cover on the bottom of the unit. Use a screwdriver to loosen the screws.
3. Install 3 new AA (LR6/AM-3) batteries following the diagram inside the battery box. (The use of new alkaline batteries is recommended for maximum performance.)
4. Replace the battery cover and tighten the screws to secure.



Remote Control

1. Locate the battery cover on the bottom of the remote control. Use a screwdriver to loosen the screw.
2. Install 2 new AAA (LR03/AM-4) batteries following the diagram inside the battery box. (The use of new alkaline batteries is recommended for maximum performance.)
3. Replace the battery cover and tighten the screw to secure.



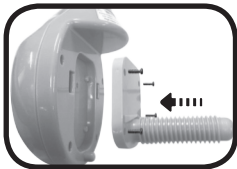
BATTERY NOTICE

- Use new alkaline batteries for maximum performance.
- Use only batteries of the same or equivalent type as recommended.
- Do not mix different types of batteries: alkaline, standard (carbon-zinc) or rechargeable, or new and used batteries.
- Do not use damaged batteries.
- Insert batteries with the correct polarity.
- Do not short-circuit the battery terminals.
- Remove exhausted batteries from the toy.
- Remove batteries during long periods of non-use.
- Do not dispose of batteries in fire.
- Do not charge non-rechargeable batteries.
- Remove rechargeable batteries from the toy before charging (if removable).
- Rechargeable batteries are only to be charged under adult supervision.

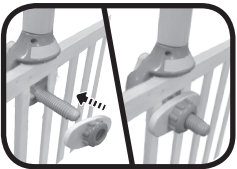
With the **Soothing Slumbers Sheep Mobile™** safety comes first. This package contains four small screws. For your child's safety, do not let your child play with the toy until it is fully assembled. To prevent possible injury by entanglement, remove the mobile from the crib once your baby begins sitting or pushing up on all fours. The crib mobile is intended for visual stimulation and is not intended to be grasped by a child. Keep the mobile out of your baby's reach. Always attach all provided fasteners (strings, straps, clamps, etc.) tightly to a crib according to the instructions. Check frequently. Do not add additional strings or straps to attach to the crib. Age range of mobile - Birth to 5 months

ASSEMBLY INSTRUCTIONS

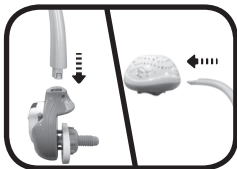
1. Insert the 4 small screws to fasten the crib attachment to the base unit.



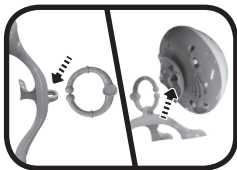
2. Attach and tighten the base to the crib using the chunky screw. Please note the spacing between the rails of crib should be between 25mm (1 inch) and 80mm (3.1 inches) wide. The cross rail should not be wider than 58mm (2.3 inches).



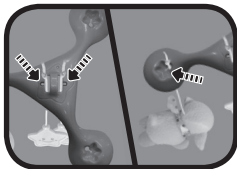
3. Insert the mobile support post into the base of the mobile, then insert the mobile support pole into the back of the projector. You will hear a click when the pole is inserted correctly.



4. Connect the mobile attachment into the bottom of the projector using the C ring.



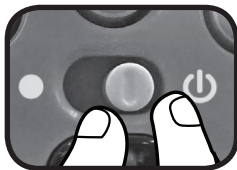
5. Attach the sheep to the three branches of the mobile attachment, and the stars to the middle holes of the mobile attachment.



PRODUCT FEATURES

1. On/Off Switch

To turn the mobile **ON**, slide the **On/Off Switch** to the **ON** (⏻) position. You will hear 4 soothing songs, then 20 soft melodies with nature sounds. To turn the mobile **OFF**, slide the **On/Off Switch** to the **OFF** (●) position.



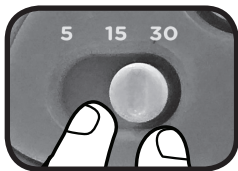
2. Automatic Shut Off

To preserve battery life, the **Soothing Slumbers Sheep Mobile™** will automatically power down after approximately 12 hours without input. The mobile can be turned on again by pressing any button. Pressing the buttons on the remote control will not activate the mobile after 12 hours without input.

NOTE: If the mobile repeatedly powers down while playing, we suggest changing the batteries.

3. Timer Switch

Slide the **Timer Switch** to select how long the mobile will play for. When the time is up the unit will enter sleep mode. Press a button or use the remote to reactivate the program. Timer options include 5, 15 or 30 minutes.



4. Light & Motor Control Button

Press the **Light & Motor Control Button** to select one of four light and mobile turning options.



5. Volume Control Buttons

Press the **Volume Control Buttons** (+) (-) to adjust the volume.



6. Sound Sensor

The **Soothing Slumbers Sheep Mobile™** is equipped with a special sound sensor. Once the selected time setting has ended, the unit will automatically power down. The sensor will reactivate the program when it detects your baby's cry for approximately 4 seconds without interruption.



7. Remote Control

The **Remote Control** can play and pause the music and sounds and control the volume within 30 feet of the mobile. Be sure there are no obstructions between the **Remote Control** and the receiver. The **Remote Control** will be disabled after 12 hours without input.



NOTE: Bright sunlight, artificial light and low battery power may reduce the mobile's sensitivity to the **Remote Control**. To increase the reliability, reduce ambient light near the mobile and make sure the batteries have power.

7. Light Projector

The **Soothing Slumbers Sheep Mobile™** can be used as a tabletop light projector. Press the button on the bottom of the projector to detach the mobile support pole. Place the light projector on a flat surface away from baby's reach.



ACTIVITIES

1. Music Button

Press the **Music Button** to play 4 songs and 40 melodies in a loop. Press the **Music Button** again to play the next song or melody.



2. Nature Sound Button

Press the **Nature Sound Button** to hear nature sounds and white noise sounds. Press the **Nature Sound Button** again to play the next sound.



SONG LYRICS

SONG 1

Sleep sweet baby, warm and cozy,
All through the night.
Let my singing gently guide you,
Sweet dreams, good night.

SONG 2

Hush now, my sweet,
It's now time to rest.
Close your eyes,
Sleep tight my love.

SONG 3

The stars are twinkling in the sky,
While the moon is perched and watches the world go by.

SONG 4

Hush, little baby, don't say a word.
It's time to sleep and have sweet dreams.

MELODY LIST

1. Ave Maria - Schubert
2. Blue Danube Waltz - Strauss
3. Beautiful Dreamer
4. Cradle Song - Brahms
5. Clair de Lune - Debussy
6. Canon In D - Pachelbel
7. Minuet in G Major - Beethoven
8. Berceuse, Op 57 - Chopin
9. Minuet (String Quintet in E Major, Op.11, No.5) - Boccherini
10. Moonlight Sonata - Beethoven
11. Swan Lake Waltz - Tchaikovsky
12. Nocturne Op. 9 No. 2 - Chopin
13. Kinderszenen - Schumann
14. Berceuse - Brahms
15. Ode to Joy - Beethoven
16. Turkish March - Mozart
17. Sonata No. 16 - Mozart
18. Serenade - Haydn
19. Fur Elise - Beethoven
20. Cello Suite No. 1 in G Major - Bach
21. All Through the Night
22. Baa, Baa Black Sheep
23. Did You Ever See a Lassie?
24. Swing Low, Sweet Chariot
25. Hush Little Baby
26. Mary Had a Little Lamb
27. Little Bo Beep
28. Are You Sleeping?
29. Oh My Darling, Clementine

30. Danny Boy
31. My Bonnie Lies Over the Ocean
32. Do Your Ears Hang Low?
33. My Wild Irish Rose
34. Bicycle Built for Two
35. Ride a Cock Horse to Banbury Cross
36. Rock-a-Bye Baby
37. Sleep, Baby, Sleep
38. An Irish Lullaby
39. Take Me Out to the Ball Game
40. When the Saints Go Marching In

CARE & MAINTENANCE

1. Keep the unit clean by wiping it with a slightly damp cloth.
2. Keep the unit out of direct sunlight and away from any direct heat sources.
3. Remove the batteries when the unit is not in use for an extended period of time.
4. Do not drop the unit on a hard surface and do not expose the unit to excess moisture.

TROUBLESHOOTING

If for some reason the program/activity stops working, please follow these steps:

1. Turn the unit **OFF**.
2. Interrupt the power supply by removing the batteries.
3. Let the unit stand for a few minutes, then replace the batteries.
4. Turn the unit back **ON**. The unit will now be ready to play again.
5. If the product still does not work, replace with an entire set of new batteries.

If the problem persists, please call our Consumer Services Department at 1-800-521-2010 in the U.S. or 1-877-352-8697 in Canada, or by going to our website at vtechkids.com and filling out our Contact Us form located under the Customer Support link. A service representative will be happy to help you.

IMPORTANT NOTE:

Creating and developing **VTech®** products is accompanied by a responsibility that we at **VTech®** take very seriously. We make every effort to ensure the accuracy of the information, which forms the value of our products. However, errors sometimes can occur. It is important for you to know that we stand behind our products and encourage you to call our Consumer Services Department at 1-800-521-2010 in the U.S. or 1-877-352-8697 in Canada, or by going to our website at vtechkids.com and filling out our Contact Us form located under the Customer Support link with any problems and/or suggestions that you might have. A service representative will be happy to help you.

Note:

This equipment has been tested and found to comply with the limits for a Class B digital device, pursuant to Part 15 of the FCC Rules. These limits are designed to provide reasonable protection against harmful interference in a residential installation. This equipment generates, uses and can radiate radio frequency energy and, if not installed and used in accordance with the instructions, may cause harmful interference to radio communications. However, there is no guarantee that interference will not occur in a particular installation. If this equipment does cause harmful interference to radio or television reception, which can be determined by turning the equipment off and on, the user is encouraged to try to correct the interference by one or more of the following measures:

- Reorient or relocate the receiving antenna.
- Increase the separation between the equipment and receiver.
- Connect the equipment into an outlet on a circuit different from that to which the receiver is connected.
- Consult the dealer or an experienced radio/TV technician for help.

THIS DEVICE COMPLIES WITH PART 15 OF THE FCC RULES. OPERATION IS SUBJECT TO THE FOLLOWING TWO CONDITIONS:
(1) THIS DEVICE MAY NOT CAUSE HARMFUL INTERFERENCE, AND
(2) THIS DEVICE MUST ACCEPT ANY INTERFERENCE RECEIVED, INCLUDING INTERFERENCE THAT MAY CAUSE UNDESIRE OPERATION.

CAN ICES-3 (B)/NMB-3(B)

Caution: Changes or modifications not expressly approved by the party responsible for compliance could void the user's authority to operate the equipment.



CAUTION:

Adult assembly required. This package contains four screws. For your child's safety, do not let your child play with the toy until it is fully assembled.

**Visit our website for more
information about our products,
downloads, resources and more.**

vtechkids.com
vtechkids.ca

Read our complete warranty policy online at
vtechkids.com/warranty
vtechkids.ca/warranty



TM & © 2018 VTech Holdings Limited.
All rights reserved.
Printed in China.
91-003494-019 ©